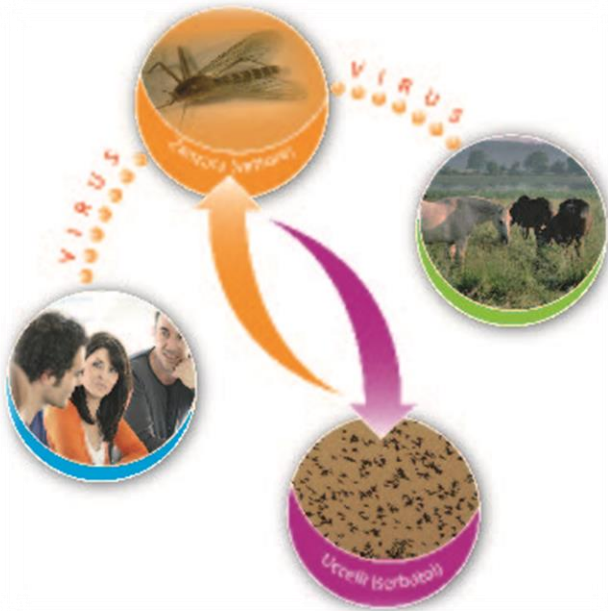


EPIDEMIOLOGICAL REPORT



WEST NILE DISEASE IN EUROPE AND IN THE MEDITERRANEAN BASIN

2022

On 12th October 2022 West Nile Disease cases have been reported in both human and birds in 11 European and Mediterranean countries. Details are provided in Table 1 and Figure 1:

Country	Species	n.total cases (1)	n.confirmed cases (2)
ITALY	Humans	566	566
	Horses	39	39
	Birds	286	286
GREECE	Horses	2	2
	Humans	264	264
SLOVAKIA	Humans	1	1
SERBIA	Humans	187	187
ROMANIA	Humans	47	47
	Birds	1	1
AUSTRIA	Horses	1	1
	Humans	6	6
FRANCE	Horses	2	2
HUNGARY	Humans	14	14
	Horses	2	2
GERMANY	Humans	8	8
	Horses	19	19
	Birds	3	3
CROATIA	Humans	8	8
	Horses	2	2
SPAIN	Horses	2	2
	Humans	4	4
	Birds	1	1
Total		1465	



Table 1. Number of cases (confirmed and probable) of West Nile Disease in Europe and in the Mediterranean Basin

Figure 1. Geographic distribution of cases (confirmed and probable) of West Nile Disease in Europe and in the Mediterranean Basin



1. For EU countries, probable and confirmed cases, as per EU case definition
2. For EU countries, confirmed cases, as per EU case definition http://ec.europa.eu/health/ph_threats/com/docs/1589_2008_en.pdf

Country	Source
ITALY	VETINFO
	ISS
GREECE	National Public Health Organization (NPHO)
GERMANY	OIE
SERBIA	ECDC
FRANCE	
HUNGARY	
ROMANIA	
AUSTRIA	
SPAIN	
CROATIA	
SLOVAKIA	

Information on the disease, legislation and other useful information can be found at:

https://westnile.izs.it/j6_wnd/home

CONTACT

National Reference Centre for the study and verification of Foreign Animal Diseases (CESME)

recognized by the Italian Ministerial Decree of 2nd May 1991.

Istituto Zooprofilattico Sperimentale dell'Abruzzo e del Molise G. Caporale, Campo Boario, 64100 Teramo.

Tel: 0861 3321 Fax: 0861 332251

cesme@izs.it

