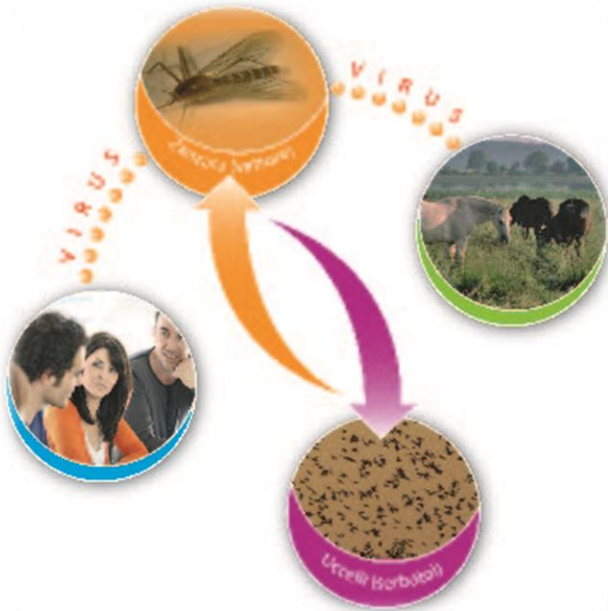


# EPIDEMIOLOGICAL REPORT



## WEST NILE DISEASE IN EUROPE AND IN THE MEDITERRANEAN BASIN

*2021*



**CESME**  
Centro di Riferenza Nazionale

On 1 October 2021 West Nile Disease cases have been reported in both human and horses in **8** European and Mediterranean countries. Details are provided in Table 1 and Figure 1:

STATE	SPECIES	N.total cases (1)	N.confirmed cases (2)
ITALY	Horses	3	3
	Humans	45	45
GREECE	Humans	53	53
SPAIN	Humans	6	6
	Horses	7	7
SERBIA	Humans	15	15
ROMANIA	Humans	7	7
AUSTRIA	Humans	3	3
HUNGARY	Humans	6	6
	Horses	9	9
GERMANY	Humans	3	3
	Horses	3	3
Total Humans		138	138
Total Horses		19	19

**Table 1.** Number of cases (confirmed and probable) of West Nile Disease in Europe and in the Mediterranean Basin



**Figure 1.** Geographic distribution of cases (confirmed and probable) of West Nile Disease in Europe and in the Mediterranean Basin



1. For EU countries, probable and confirmed cases, as per EU case definition
2. For EU countries, confirmed cases, as per EU case definition  
[http://ec.europa.eu/health/ph\\_threats/com/docs/1589\\_2008\\_en.pdf](http://ec.europa.eu/health/ph_threats/com/docs/1589_2008_en.pdf)



 **CESME**  
Centro di Riferenza Nazionale

Information on the disease, legislation and other useful information can be found at:  
[http://sorveglianza.izs.it/emergenze/west\\_nile/emergenze.html](http://sorveglianza.izs.it/emergenze/west_nile/emergenze.html)



COUNTRY	SOURCE
Italy	<u>VETINFO</u>
	<u>ISS</u>
Spain	<u>JUNTA DE ANDALUCIA</u>
Austria	<u>ecdc</u>
Serbia	
Romania	
Germany	
Greece	
Spain	

**Table 2.** Source of information and reference links

#### CONTACT

**National Reference Centre for the study and verification of Foreign Animal Diseases (CESME)**

recognized by the Italian Ministerial Decree of 2<sup>nd</sup> May 1991.

Istituto Zooprofilattico Sperimentale dell'Abruzzo e del Molise G. Caporale, Campo Boario, 64100 Teramo.

Tel: 0861 3321 Fax: 0861 332251

cesme@izs.it

