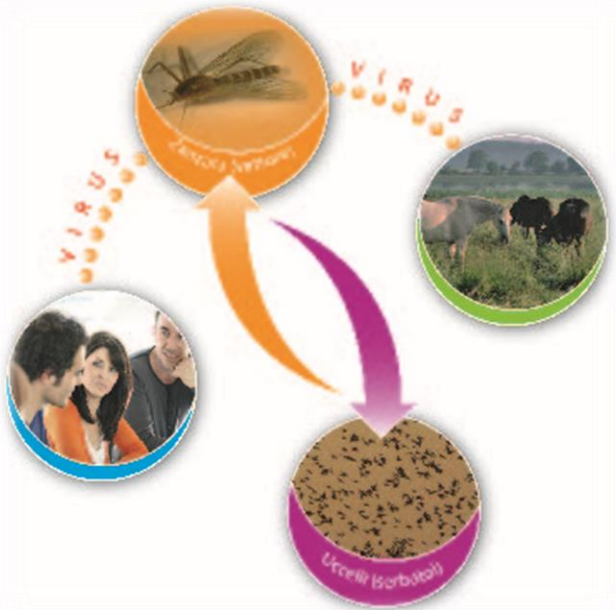


EPIDEMIOLOGICAL REPORT



WEST NILE DISEASE IN EUROPE AND IN THE MEDITERRANEAN BASIN

2021



On 5 August 2021 West Nile Disease cases have been reported in both human and horses in **2** European and Mediterranean countries. Details are provided in Table 1 and Figure 1:

COUNTRY	SPECIES	No.total cases (1)	No.confirmed cases(2)
ITALY	Humans	2	2
SPAIN	Horses	1	1
Total Humans		2	2
Total Horses		1	1



Table 1. Number of cases (confirmed and probable) of West Nile Disease in Europe and in the Mediterranean Basin

Figure 1. Geographic distribution of cases (confirmed and probable) of West Nile Disease in Europe and in the Mediterranean Basin



1. For EU countries, probable and confirmed cases, as per EU case definition
2. For EU countries, confirmed cases, as per EU case definition
http://ec.europa.eu/health/ph_threats/com/docs/1589_2008_en.pdf



 **CESME**
Centro di Referenza Nazionale

Information on the disease, legislation and other useful information can be found at:
http://sorveglianza.izs.it/emergenze/west_nile/emergenze.html



COUNTRY	SOURCE
Italy	<u>VETINFO</u>
	<u>ISS</u>
Spain	<u>JUNTA DE ANDALUCIA</u>

Table 2. Source of information and reference links

CONTACT

National Reference Centre for the study and verification of Foreign Animal Diseases (CESME)

recognized by the Italian Ministerial Decree of 2nd May 1991.

Istituto Zooprofilattico Sperimentale dell'Abruzzo e del Molise G. Caporale, Campo Boario, 64100 Teramo.

Tel: 0861 3321 Fax: 0861 332251

cesme@izs.it

