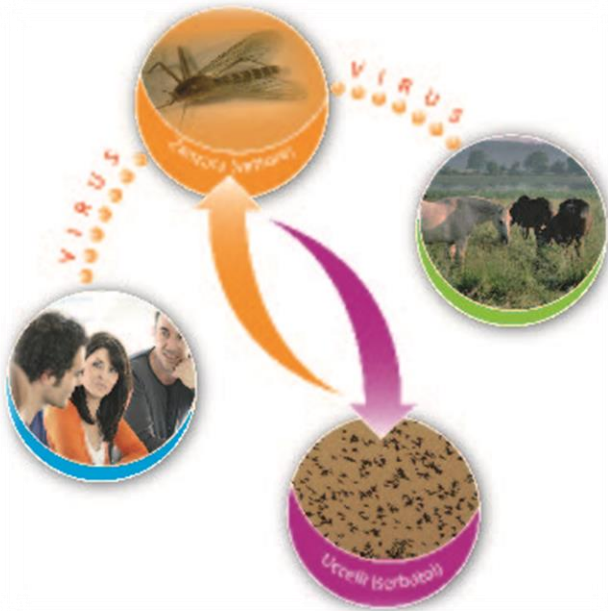


EPIDEMIOLOGICAL REPORT



WEST NILE DISEASE IN EUROPE AND IN THE MEDITERRANEAN BASIN

2022

On 20 July 2022 West Nile Disease cases have been reported in both human and birds in 3 European and Mediterranean countries. Details are provided in Table 1 and Figure 1:

Country	Species	n.total cases (1)	n.confirmed cases(2)
ITALY	Humans	1	1
	Birds	6	6
GREECE	Humans	1	1
GERMANY	Birds	1	1
n. total cases		9	

Table 1. Number of cases (confirmed and probable) of West Nile Disease in Europe and in the Mediterranean Basin

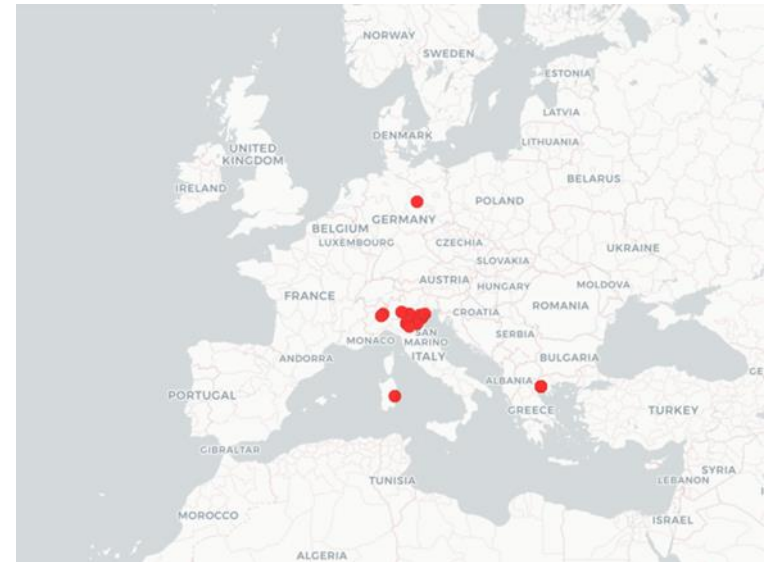


Figure 1. Geographic distribution of cases (confirmed and probable) of West Nile Disease in Europe and in the Mediterranean Basin

1. For EU countries, probable and confirmed cases, as per EU case definition
2. For EU countries, confirmed cases, as per EU case definition http://ec.europa.eu/health/ph_threats/com/docs/1589_2008_en.pdf

Country	Source
ITALY	VETINFO
	ISS
GREECE	Uomo
GERMANY	OIE

Information on the disease, legislation and other useful information can be found at:

https://westnile.izs.it/j6_wnd/home

CONTACT

National Reference Centre for the study and verification of Foreign Animal Diseases (CESME)

recognized by the Italian Ministerial Decree of 2nd May 1991.

Istituto Zooprofilattico Sperimentale dell'Abruzzo e del Molise G. Caporale, Campo Boario, 64100 Teramo.

Tel: 0861 3321 Fax: 0861 332251

cesme@izs.it

