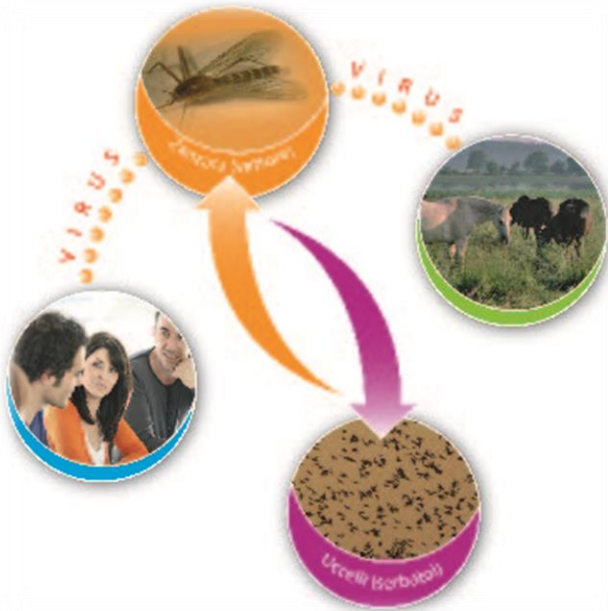


# EPIDEMIOLOGICAL REPORT



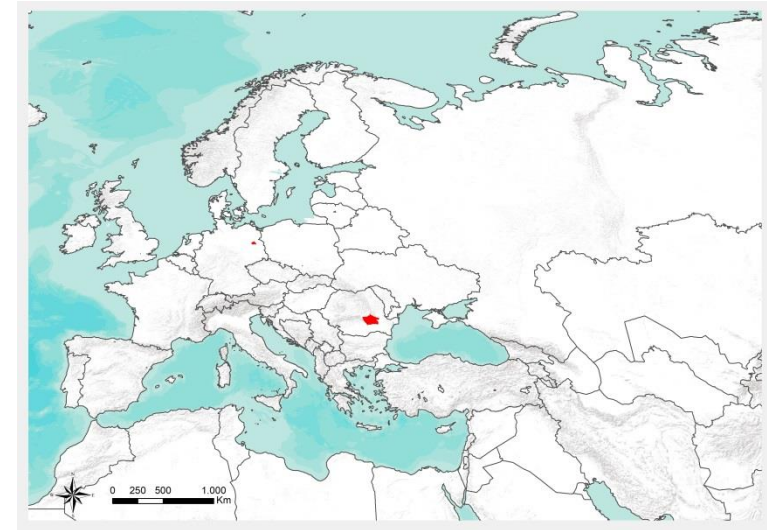
## WEST NILE DISEASE IN EUROPE AND IN THE MEDITERRANEAN BASIN

*2020*

On 23 July 2020 West Nile Disease cases have been reported in both human and birds in **2** European and Mediterranean countries. Details are provided in Table 1 and Figure 1:

COUNTRY	SPECIE	No.TOTAL CASES	No. CONFIRMED CASES
ROMANIA	Humans	2	2
GERMANY	Birds	28	28

**Table 1.** Number of cases (confirmed and probable) of West Nile Disease in Europe and in the Mediterranean Basin



**Figure 1.** Geographic distribution of cases (confirmed and probable) of West Nile Disease in Europe and in the Mediterranean Basin

1. For EU countries, probable and confirmed cases, as per EU case definition
2. For EU countries, confirmed cases, as per EU case definition  
[http://ec.europa.eu/health/ph\\_threats/com/docs/1589\\_2008\\_en.pdf](http://ec.europa.eu/health/ph_threats/com/docs/1589_2008_en.pdf)



COUNTRY	SOURCE
Romania	<u>ecdc</u> <b>Rapid alert system for Blood and Blood Components (RAB)</b>
Germany	<u>OIE</u>

**Table 2.** Source of information and reference links

Information on the disease, legislation and other useful information can be found at:  
[http://sorveglianza.izs.it/emergenze/west\\_nile/emergenze.html](http://sorveglianza.izs.it/emergenze/west_nile/emergenze.html)

#### CONTACT

**National Reference Centre for the study and verification of Foreign Animal Diseases (CESME)**

recognized by the Italian Ministerial Decree of 2<sup>nd</sup> May 1991.

Istituto Zooprofilattico Sperimentale dell'Abruzzo e del Molise G. Caporale, Campo Boario, 64100 Teramo.

Tel: 0861 3321 Fax: 0861 332251

cesme@izs.it

