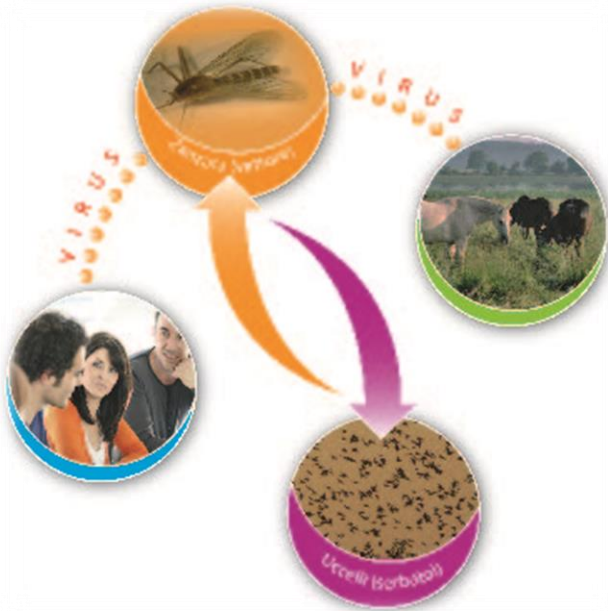


EPIDEMIOLOGICAL REPORT



WEST NILE DISEASE IN EUROPE AND IN THE MEDITERRANEAN BASIN

2020

On 3rd September 2020 West Nile Disease cases have been reported in both human and birds in 7 European and Mediterranean countries. Details are provided in Table 1 and Figure 1:

COUNTRY	SPECIES	N.TOTAL CASES	N. CONFIRMED CASES
ROMANIA	Humans	2	2
GERMANY	Birds	28	28
GREECE	Humans	55	55
ITALY	Horses	5	5
	Birds	47	47
	Humans	29	29
SPAIN	Horses	49	49
	Humans	49	49
PORTUGAL	Horses	1	1
FRANCE	Horses	1	1

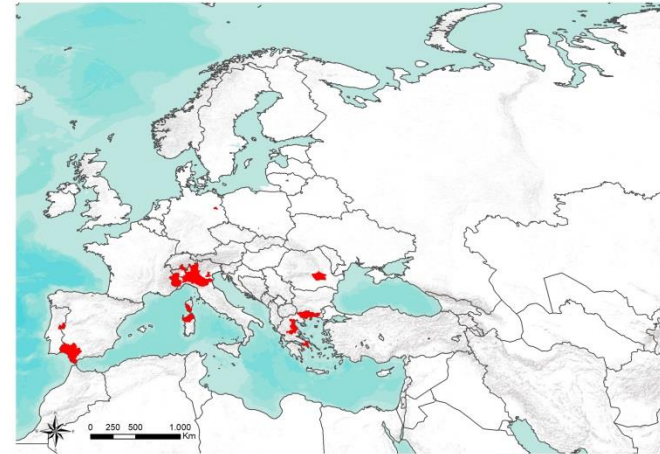


Table 1. Number of cases (confirmed and probable) of West Nile Disease in Europe and in the Mediterranean Basin

Figure 1. Geographic distribution of cases (confirmed and probable) of West Nile Disease in Europe and in the Mediterranean Basin



1. For EU countries, probable and confirmed cases, as per EU case definition
2. For EU countries, confirmed cases, as per EU case definition
http://ec.europa.eu/health/ph_threats/com/docs/1589_2008_en.pdf



 **CESME**
Centro di Riferenza Nazionale

Information on the disease, legislation and other useful information can be found at:
http://sorveglianza.izs.it/emergenze/west_nile/emergenze.html



COUNTRY	SOURCE
Romania	<u>ecdc</u>
	Rapid alert system for Blood and Blood Components (RAB)
Germany	<u>OIE</u>
Italy	<u>ISS</u>
	<u>VETINFO</u>
Spain	JUNTA DE ANDALUCIA
Portugal	<u>ecdc</u>
France	<u>OIE</u>
Greece	<u>Keelpno</u>

Table 2. Source of information and reference links

CONTACT

National Reference Centre for the study and verification of Foreign Animal Diseases (CESME)

recognized by the Italian Ministerial Decree of 2nd May 1991.

Istituto Zooprofilattico Sperimentale dell'Abruzzo e del Molise G. Caporale, Campo Boario, 64100 Teramo.

Tel: 0861 3321 Fax: 0861 332251

cesme@izs.it

