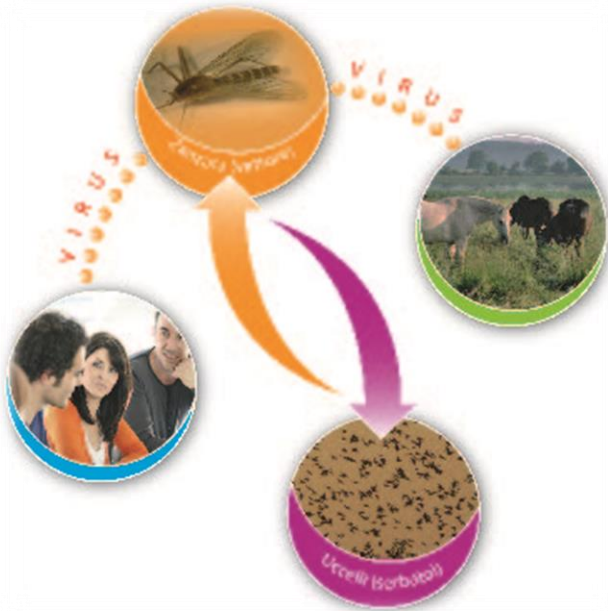


EPIDEMIOLOGICAL REPORT



WEST NILE DISEASE IN EUROPE AND IN THE MEDITERRANEAN BASIN

2020



On 25 September 2020 West Nile Disease cases have been reported in both human and birds in **8** European and Mediterranean countries. Details are provided in Table 1 and Figure 1:

COUNTRY	SPECIES	No. TOTAL CASES	No. CONFIRMED CASES
FRANCE	HORSES	1	1
GERMANY	HORSES	8	8
	BIRDS	28	28
GREECE	HUMANS	109	109
ITALY	BIRDS	75	75
	HUMANS	43	43
	HORSES	10	10
ROMANIA	HUMANS	4	4
SPAIN	HORSES	51	51
	HUMANS	61	61
PORTUGAL	HORSES	1	1
HUNGARY	HUMANS	3	3

Table 1. Number of cases (confirmed and probable) of West Nile Disease in Europe and in the Mediterranean Basin

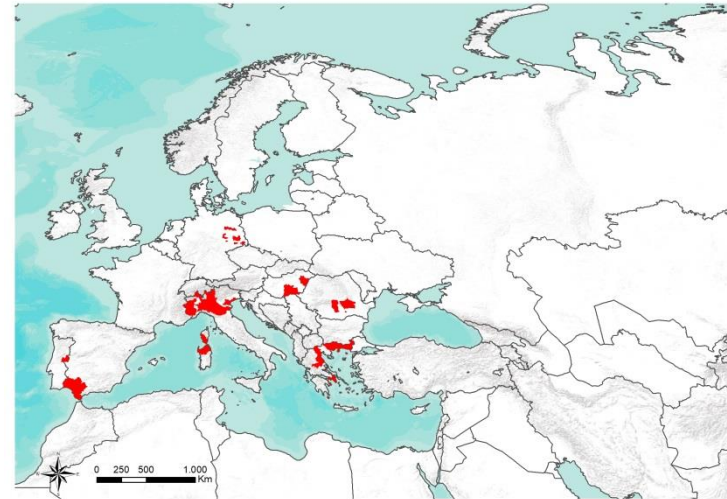


Figure 1. Geographic distribution of cases (confirmed and probable) of West Nile Disease in Europe and in the Mediterranean Basin



1. For EU countries, probable and confirmed cases, as per EU case definition
2. For EU countries, confirmed cases, as per EU case definition
http://ec.europa.eu/health/ph_threats/com/docs/1589_2008_en.pdf



 **CESME**
Centro di Riferenza Nazionale

Information on the disease, legislation and other useful information can be found at:
http://sorveglianza.izs.it/emergenze/west_nile/emergenze.html



COUNTRY	SOURCE
Greece	<u>Hellenic Center for Disease Control & Prevention</u>
Italia	<u>VETINFO</u>
	<u>ISS</u>
Germany	<u>OIE</u>
Romania	<u>ecdc</u>
Spagna	<u>JUNTA DE ANDALUCIA</u>
France	<u>OIE</u>
Portugal	<u>ecdc</u>
Hungary	

Table 2. Source of information and reference links

CONTACT

National Reference Centre for the study and verification of Foreign Animal Diseases (CESME)

recognized by the Italian Ministerial Decree of 2nd May 1991.

Istituto Zooprofilattico Sperimentale dell'Abruzzo e del Molise G. Caporale, Campo Boario, 64100 Teramo.

Tel: 0861 3321 Fax: 0861 332251

cesme@izs.it

