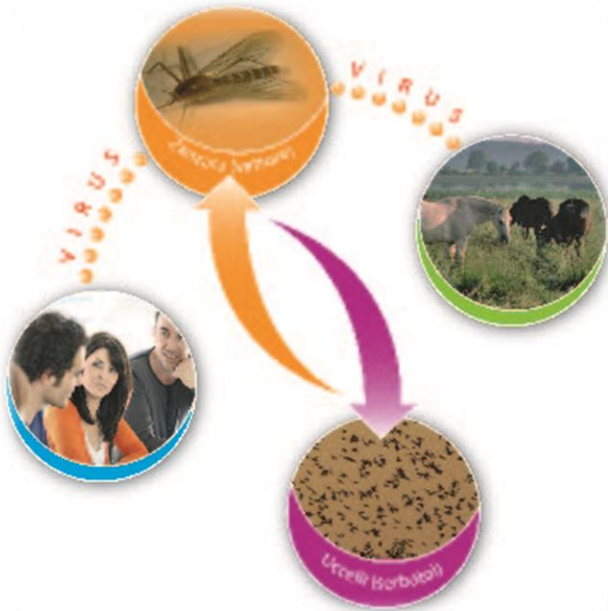


EPIDEMIOLOGICAL REPORT



WEST NILE DISEASE IN EUROPE AND IN THE MEDITERRANEAN BASIN

2021



 **CESME**
Centro di Riferenza Nazionale

On 5 November 2021 West Nile Disease cases have been reported in both human and horses in **10** European and Mediterranean countries. Details are provided in Table 1 and Figure 1:

STATE	SPECIES	N.total cases (1)	N.confirmed cases (2)
ITALY	Horses	4	4
	Humans	55	55
GREECE	Horses	1	1
	Humans	57	57
SPAIN	Humans	6	6
	Horses	10	10
SERBIA	Humans	18	18
ROMANIA	Humans	7	7
AUSTRIA	Humans	3	3
HUNGARY	Humans	7	7
	Horses	3	3
GERMANY	Horses	15	15
	Humans	3	3
FRANCE	Horses	1	1
PORTUGAL	Horses	1	1
Total Humans		156	156
Total Horses		38	38

Table 1. Number of cases (confirmed and probable) of West Nile Disease in Europe and in the Mediterranean Basin



Figure 1. Geographic distribution of cases (confirmed and probable) of West Nile Disease in Europe and in the Mediterranean Basin

1. For EU countries, probable and confirmed cases, as per EU case definition
2. For EU countries, confirmed cases, as per EU case definition
http://ec.europa.eu/health/ph_threats/com/docs/1589_2008_en.pdf



 **CESME**
Centro di Riferenza Nazionale

Information on the disease, legislation and other useful information can be found at:
http://sorveglianza.izs.it/emergenze/west_nile/emergenze.html



COUNTRY	SOURCE
Italy	<u>VETINFO</u>
	<u>ISS</u>
Spain	<u>JUNTA DE ANDALUCIA</u>
Austria	<u>ecdc</u>
Serbia	
Romania	
Greece	
Hungary	
Portugal	
France	
Germany	

Table 2. Source of information and reference links

CONTACT

National Reference Centre for the study and verification of Foreign Animal Diseases (CESME)

recognized by the Italian Ministerial Decree of 2nd May 1991.

Istituto Zooprofilattico Sperimentale dell'Abruzzo e del Molise G. Caporale, Campo Boario, 64100 Teramo.

Tel: 0861 3321 Fax: 0861 332251

cesme@izs.it

