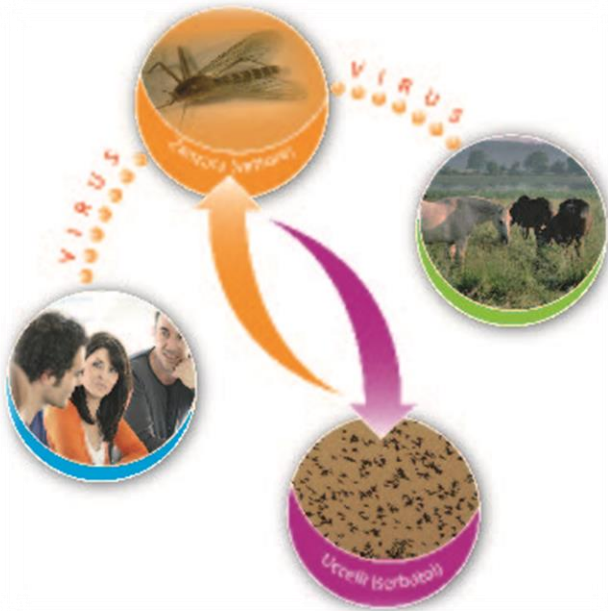


EPIDEMIOLOGICAL REPORT



WEST NILE DISEASE IN EUROPE AND IN THE MEDITERRANEAN BASIN

2022

Since the beginning of the 2022 transmission season, no outbreaks among equids and no outbreaks among birds have been reported by EU/EEA and EU-neighbouring countries.



Information on the
disease, legislation and
other useful
information can be
found at:

https://westnile.izs.it/j6_wnd/home

CONTACT

National Reference Centre for the study and verification of Foreign Animal Diseases (CESME)

recognized by the Italian Ministerial Decree of 2nd May 1991.

Istituto Zooprofilattico Sperimentale dell'Abruzzo e del Molise G. Caporale, Campo Boario, 64100 Teramo.

Tel: 0861 3321 Fax: 0861 332251

cesme@izs.it

