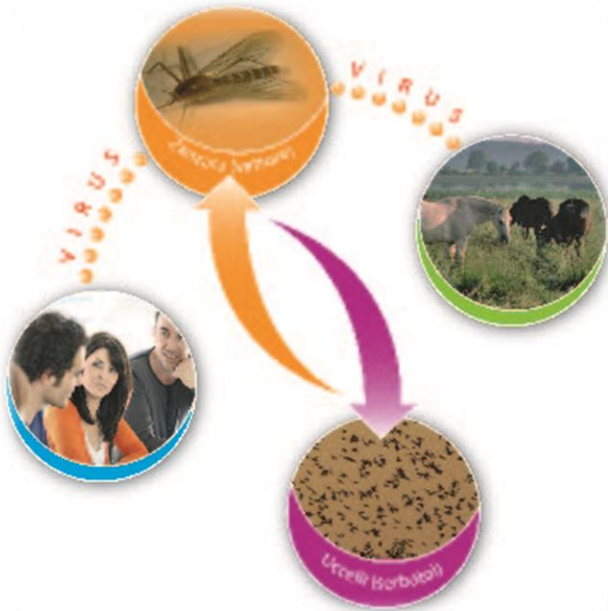


# EPIDEMIOLOGICAL REPORT



## WEST NILE DISEASE IN EUROPE AND IN THE MEDITERRANEAN BASIN

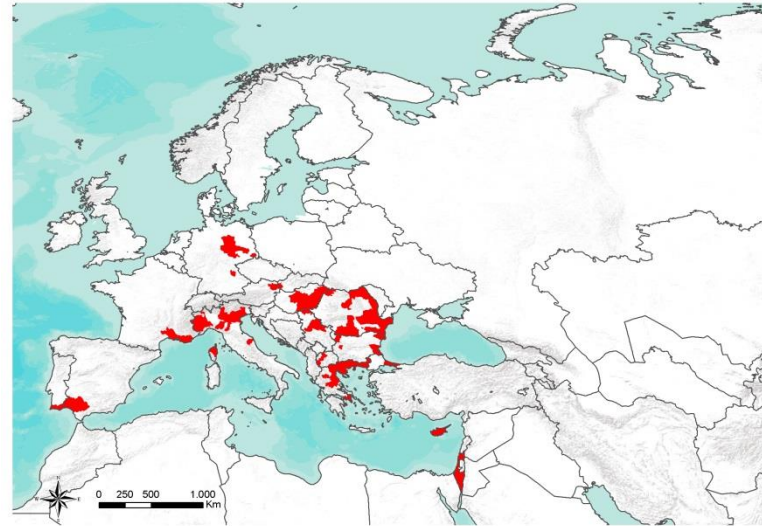
*2019*



**CESME**  
Centro di Riferenza Nazionale

On 24<sup>th</sup> November, 2019 West Nile Disease cases have been reported in both human and horses in **15** European and Mediterranean countries. Details are provided in Table 1 and Figure 1:

COUNTRY	SPECIE	No. TOTAL CASES	No. CONFIRMED CASES
GREECE	Humans	225	225
	Horses	21	21
ITALY	Humans	56	56
	Horses	8	8
ROMANIA	Humans	66	66
CYPRUS	Humans	16	14
BULGARIA	Humans	4	4
	Horses	7	7
HUNGARY	Humans	36	34
	Horses	27	27
AUSTRIA	Horses	4	4
	Humans	4	4
TURKEY	Humans	10	10
	Horses	4	4
GERMANY	Horses	30	30
	Humans	13	13
FRANCE	Humans	2	1
	Horses	1	1
ISRAEL	Humans	10	2
NORTH MACEDONIA	Humans	6	3
PORTUGAL	Horses	1	1
SPAIN	Horses	4	4
Total Humans		467	451
Total Horses		88	88



**Table 1.** Number of cases (confirmed and probable) of West Nile Disease in Europe and in the Mediterranean Basin



**Figure 1.** Geographic distribution of cases (confirmed and probable) of West Nile Disease in Europe and in the Mediterranean Basin

1. For EU countries, probable and confirmed cases, as per EU case definition
2. For EU countries, confirmed cases, as per EU case definition  
[http://ec.europa.eu/health/ph\\_threats/com/docs/1589\\_2008\\_en.pdf](http://ec.europa.eu/health/ph_threats/com/docs/1589_2008_en.pdf)



 **CESME**  
Centro di Riferenza Nazionale



Information on the disease, legislation and other useful information can be found at:  
[http://sorveglianza.izs.it/emergenze/west\\_nile/emergenze.html](http://sorveglianza.izs.it/emergenze/west_nile/emergenze.html)



COUNTRY	SOURCE
Greece	<u>OIE</u>
Cyprus	<u>Hellenic Center for Disease Control &amp; Prevention</u>
Italy	<u>VETINFO</u>
	<u>ISS</u>
Hungary	
Austria	
North Macedonia	
Germany	
Bulgaria	<u>ecdc</u>
Romania	
Turkey	
Slovakia	
Israel	
Serbia	
France	<u>Agence régionale de santé Provence-Alpes-Côte-d'Azur</u>
Spain	<u>JUNTA DE ANDALUCIA</u>
Portugal	<u>OIE</u>

**Table 2.** Source of information and reference links

#### CONTACT

**National Reference Centre for the study and verification of Foreign Animal Diseases (CESME)**

recognized by the Italian Ministerial Decree of 2<sup>nd</sup> May 1991.

Istituto Zooprofilattico Sperimentale dell'Abruzzo e del Molise G. Caporale, Campo Boario, 64100 Teramo.

Tel: 0861 3321 Fax: 0861 332251

[cesme@izs.it](mailto:cesme@izs.it)

