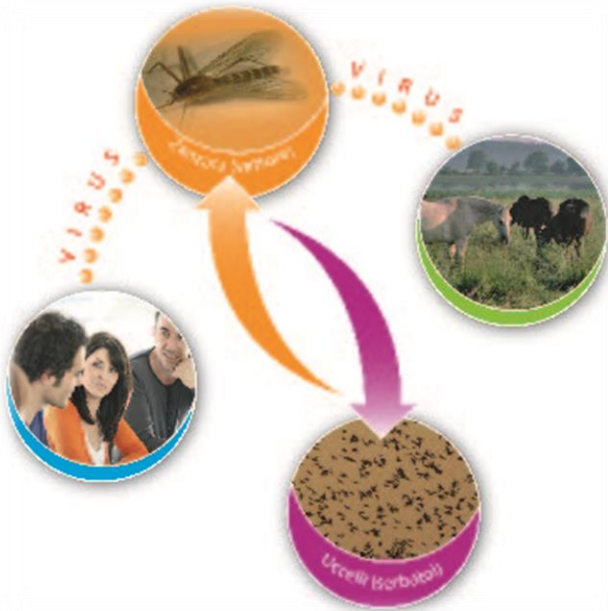


EPIDEMIOLOGICAL REPORT



WEST NILE DISEASE IN EUROPE AND IN THE MEDITERRANEAN BASIN

2020



CESME
Centro di Riferenza Nazionale

On 3 October 2020 West Nile Disease cases have been reported in both human and birds in **10** European and Mediterranean countries. Details are provided in Table 1 and Figure 1:

COUNTRY	SPECIES	No. TOTAL CASES	No. CONFIRMED CASES
FRANCE	HORSES	1	1
GERMANY	HORSES	18	18
	HUMANS	12	12
GREECE	BIRDS	28	28
	HUMANS	135	135
ITALY	BIRDS	98	98
	HUMANS	57	57
ROMANIA	HORSES	11	11
	HUMANS	6	6
SPAIN	HORSES	126	126
	HUMANS	75	75
PORTUGAL	HORSES	1	1
HUNGARY	HORSES	1	1
	HUMANS	1	1
BULGARIA	BIRDS	1	1
AUSTRIA	HORSES	1	1

Table 1. Number of cases (confirmed and probable) of West Nile Disease in Europe and in the Mediterranean Basin

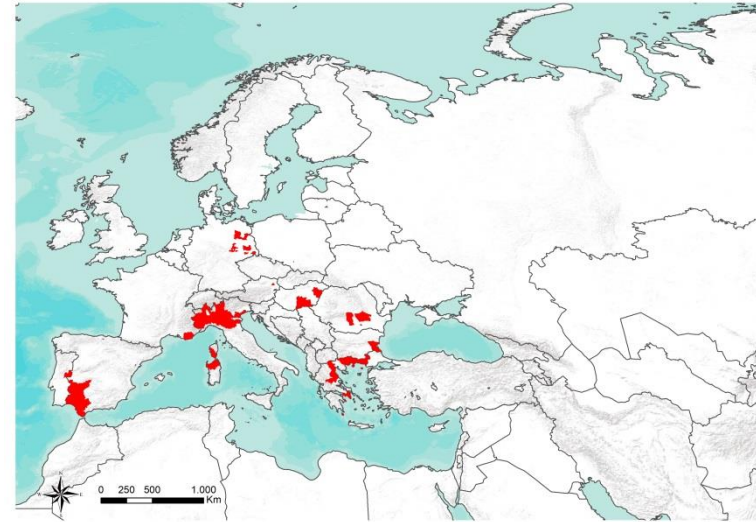


Figure 1. Geographic distribution of cases (confirmed and probable) of West Nile Disease in Europe and in the Mediterranean Basin



1. For EU countries, probable and confirmed cases, as per EU case definition
2. For EU countries, confirmed cases, as per EU case definition
http://ec.europa.eu/health/ph_threats/com/docs/1589_2008_en.pdf



 **CESME**
Centro di Riferenza Nazionale

Information on the disease, legislation and other useful information can be found at:
http://sorveglianza.izs.it/emergenze/west_nile/emergenze.html



COUNTRY	SOURCE
Greece	<u>Hellenic Center for Disease Control & Prevention</u>
Italia	<u>VETINFO</u>
	<u>ISS</u>
Germany	<u>OIE</u>
Romania	<u>ecdc</u>
Spagna	<u>JUNTA DE ANDALUCIA</u>
France	<u>OIE</u>
Portugal	<u>ecdc</u>
Hungary	
Austria	<u>OIE</u>
Bulgaria	

Table 2. Source of information and reference links

CONTACT

National Reference Centre for the study and verification of Foreign Animal Diseases (CESME)

recognized by the Italian Ministerial Decree of 2nd May 1991.

Istituto Zooprofilattico Sperimentale dell'Abruzzo e del Molise G. Caporale, Campo Boario, 64100 Teramo.

Tel: 0861 3321 Fax: 0861 332251

cesme@izs.it

