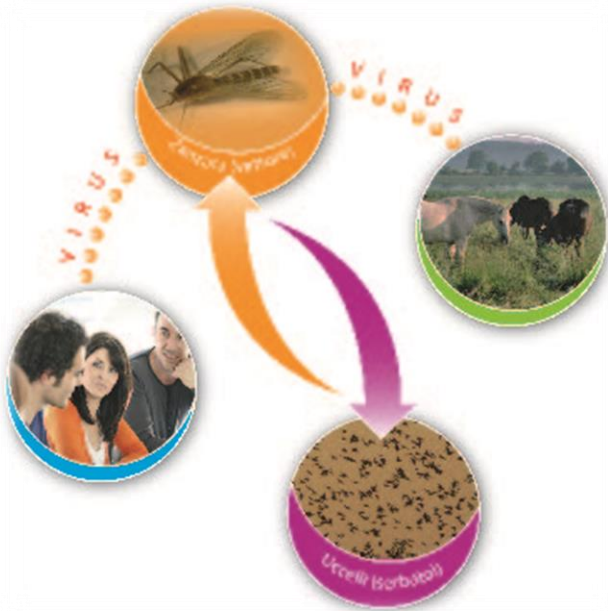


EPIDEMIOLOGICAL REPORT



WEST NILE DISEASE IN EUROPE AND IN THE MEDITERRANEAN BASIN

2020



On 21 October 2020 West Nile Disease cases have been reported in both human and birds in **11** European and Mediterranean countries. Details are provided in Table 1 and Figure 1:

COUNTRY	SPECIES	No. TOTAL CASES	No. CONFIRMED CASES
FRANCE	HORSES	5	5
GERMANY	HORSES	20	20
	HUMANS	12	12
GREECE	BIRDS	28	28
	HUMANS	142	142
ITALY	BIRDS	99	99
	HUMANS	68	68
	HORSES	11	11
ROMANIA	HUMANS	6	6
SPAIN	HORSES	131	131
	HUMANS	76	76
PORTUGAL	HORSES	2	2
HUNGARY	HORSES	2	2
	HUMANS	3	3
BULGARIA	BIRDS	2	2
	HUMANS	1	1
AUSTRIA	HORSES	2	2
NETHERLANDS	HUMANS	1	1

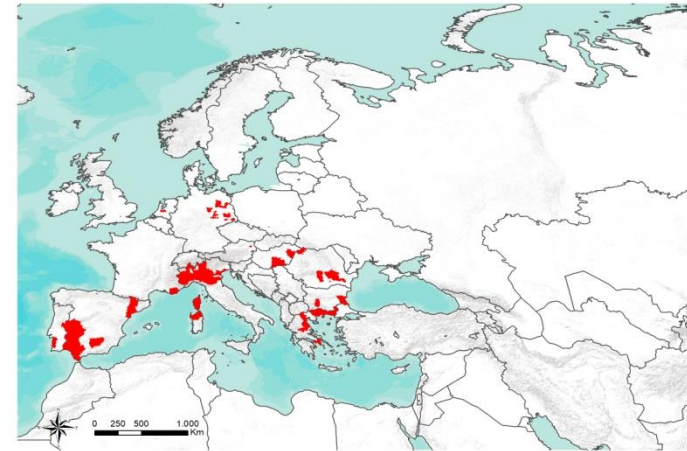


Table 1. Number of cases (confirmed and probable) of West Nile Disease in Europe and in the Mediterranean Basin

Figure 1. Geographic distribution of cases (confirmed and probable) of West Nile Disease in Europe and in the Mediterranean Basin



1. For EU countries, probable and confirmed cases, as per EU case definition
2. For EU countries, confirmed cases, as per EU case definition
http://ec.europa.eu/health/ph_threats/com/docs/1589_2008_en.pdf



 **CESME**
Centro di Riferenza Nazionale

Information on the disease, legislation and other useful information can be found at:
http://sorveglianza.izs.it/emergenze/west_nile/emergenze.html



COUNTRY	SOURCE
Greece	<u>Hellenic Center for Disease Control & Prevention</u>
Italia	<u>VETINFO</u>
	<u>ISS</u>
Germany	<u>OIE</u>
Romania	<u>ecdc</u>
Spagna	<u>JUNTA DE ANDALUCIA</u>
France	<u>OIE</u>
Portugal	<u>ecdc</u>
Hungary	
Austria	OIE
Bulgaria	
Netherlands	<u>ecdc</u>

Table 2. Source of information and reference links

CONTACT

National Reference Centre for the study and verification of Foreign Animal Diseases (CESME)

recognized by the Italian Ministerial Decree of 2nd May 1991.

Istituto Zooprofilattico Sperimentale dell'Abruzzo e del Molise G. Caporale, Campo Boario, 64100 Teramo.

Tel: 0861 3321 Fax: 0861 332251

cesme@izs.it

